



Your PET/CT is scheduled for:

Date: _____

Time: _____



What is a PET/CT scan?

- PET/CT is the most advanced medical imaging technique today, combining Positron Emission Tomography with Computed Tomography.
- PET/CT combines the fine structural detail of CT with PET's ability to detect changes in cell function. This combination allows for earlier and more accurate detection of disease than CT or PET alone.
- A PET/CT scan helps your physician diagnose a problem, determine the treatment approach or monitor your therapy.

How does PET/CT work?

- Cancer cells grow at a fast rate.
- Growing cancer cells use glucose as a primary source of energy. The faster cells grow the more glucose is consumed.
- A form of glucose called FDG, which emits particles called positrons, is injected before a PET/CT study.
- The FDG molecules are consumed more in fast-growing cancer cells than in normal cells, resulting in concentrations of FDG, and positrons, in areas of cancer.
- A PET/CT scanner detects where the positrons are being emitted from within a patient and provides images that map the locations.
- PET FDG mapping is combined with CT image's structural detail in order to identify both the presence of disease and its precise location.

Conveniently located minutes
from exit 343 of the Pennsylvania Turnpike
Offering free parking

Abington PET/CT of Willow Grove

2701 Blair Mill Rd.
Blairwood Building Suite 9
Willow Grove, PA 19090

Scheduling 215-481-3377
Fax 215-481-7682

<http://abingtonpetct.intuitwebsites.com/>



For more information, please contact PETfoundations.com

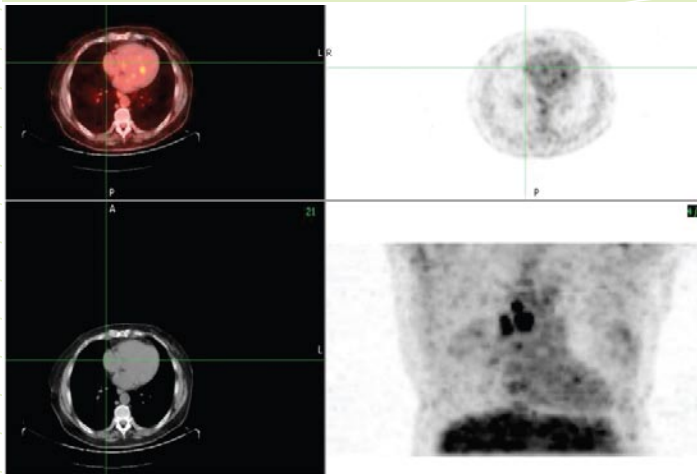
Information provided by Cardinal Health
Cardinalhealth.com

*PET/CT
Molecular imaging for cancer
and what you need to know.*



Preparing for your PET/CT scan

- For 6 hours before your test, do not eat or drink (except water). Do not even chew gum.
- If you are diabetic, your last meal before the scan should be high in protein and low in carbohydrates. For example:
 - Dinner – steak, chicken, fish, cheese, asparagus, broccoli, mushrooms
No pastas, potatoes, rice or bread
 - Breakfast – eggs, bacon, sausage. No breakfast should be eaten if your appointment is before noon
- Continue to take any medications prescribed by your physician, except any steroid medications or cough syrups
- Avoid caffeine, sugar, tobacco and heavy exercise for 24 hours prior to your exam.
- If you have diabetes, our scheduler will provide detailed instructions for the day prior to and morning of your exam
- If you are or think you are pregnant, discuss with your physician. Generally PET/CT scans are not performed on pregnant patients



What to bring and wear

- Bring with you:
 - Insurance cards
 - Photo ID
 - Previous CT, X-Rays or PET/CT (not performed at Abington Health)
 - Medical History
 - Pathology reports (not performed at Abington Health)
- Wear:
 - Wear warm comfortable clothes, since the scanner room is cool
 - Avoid clothes with heavy buckles or metal components
 - Avoid jewelry and underwire bras, as these will have to be removed prior to the scan

Arrive on time

- Please arrive 15 minutes before your scheduled appointment time
- If you must cancel or reschedule, please do so at least 24 hours before your appointment.

Your PET/CT scan

- After registering, you will go to a preparation area where a Nuclear Medicine Technologist will insert a small IV line into your arm.
- Your fasting blood glucose level will be checked prior to the administration of the FDG.
- A small amount of FDG, a form of glucose, will be injected through the IV line. This is painless.
- You will rest quietly without speaking, in a darkened room for 60 to 90 minutes to allow the FDG to distribute in your body.
- Your scan will take approximately 15 to 30 minutes.

After your scan:

- You can leave immediately
- Your activity will not be restricted. You may drive if you wish, resume your normal diet, exercise and take all prescribed medications
- As an extra precaution, avoid getting close to an infant or anyone who is pregnant for 12 to 24 hours
- Increase your fluid intake for the remainder of the day, as this will aid in flushing the remaining FDG out of your body
- The PET/CT scan will be reviewed by a physician who will send a report to your doctor
- Your doctor will contact you about the results of the PET/CT scan

